

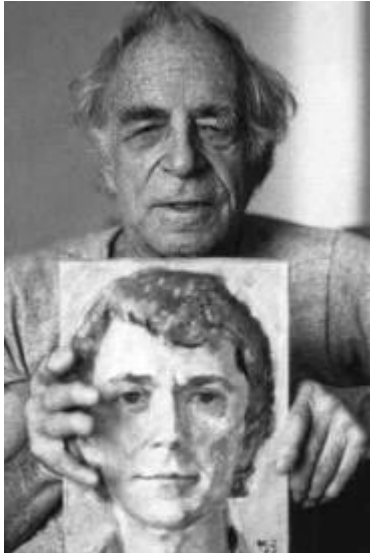
Perception of **Edges**

Perception of **Spaces**

Perception of **Relationships**

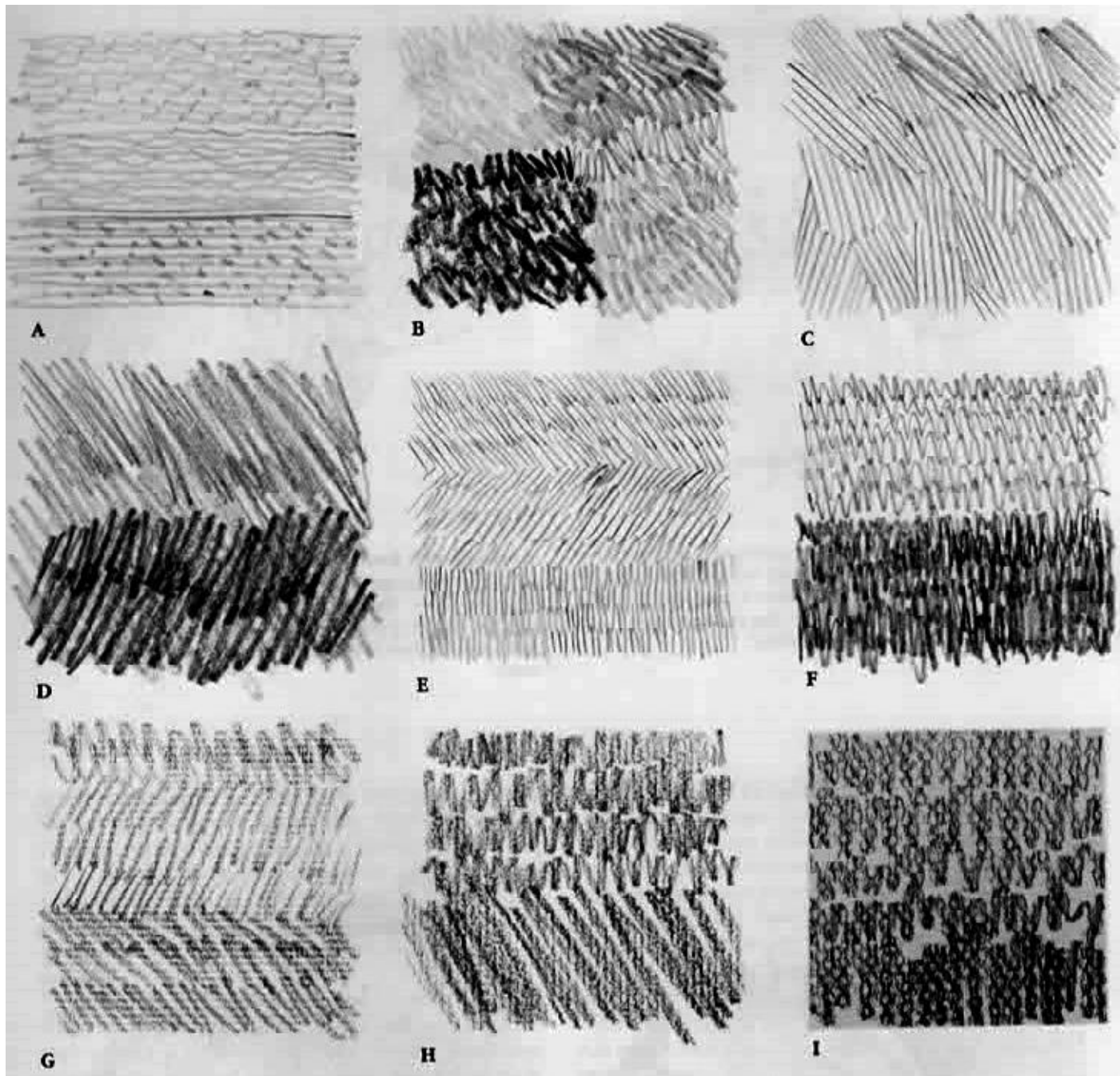
 Perception of **Light and Shadow**

Perception of **the Whole**



"The [artist] draws with his eyes, not with his hands."

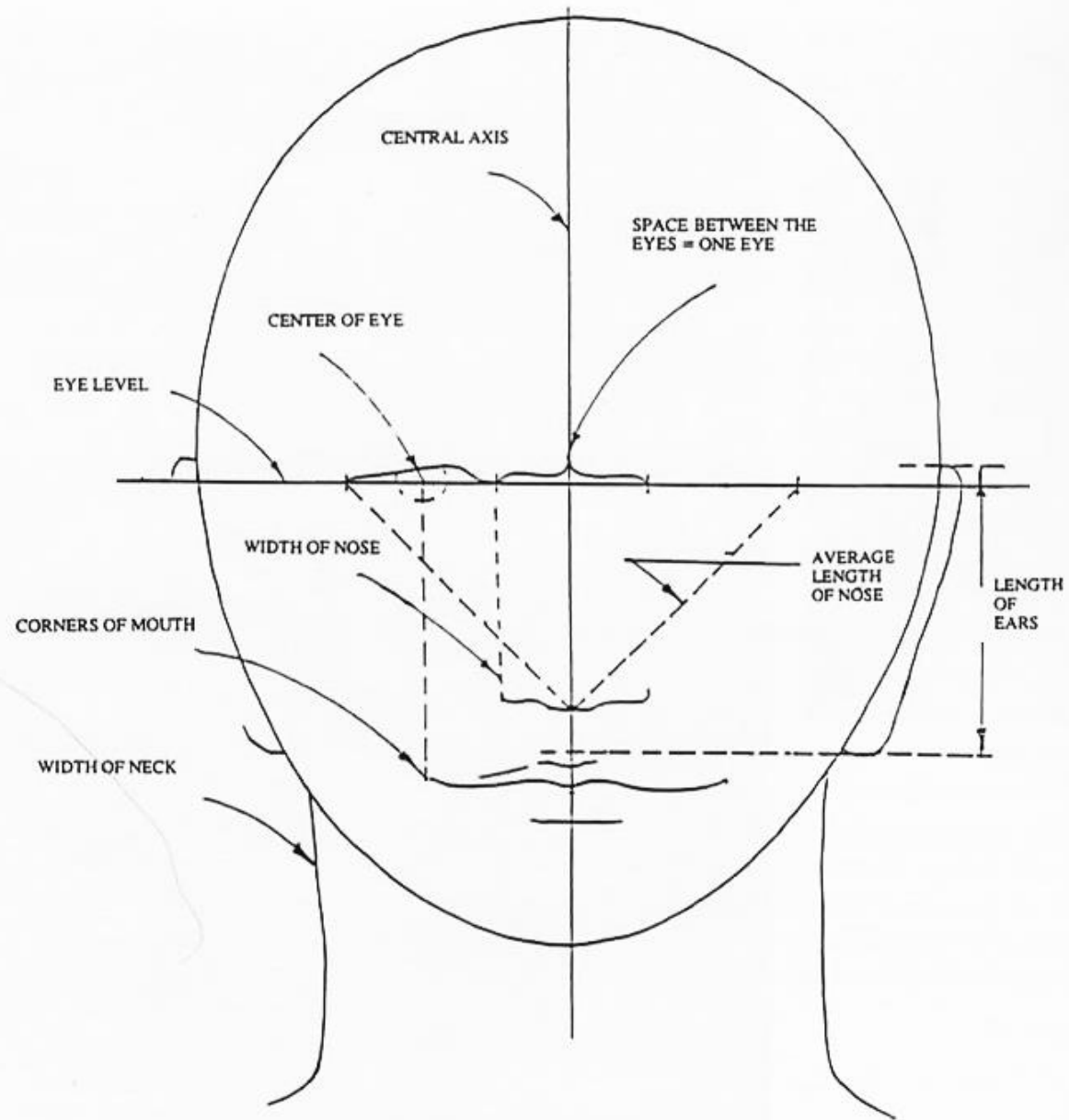
-Maurice Grosser



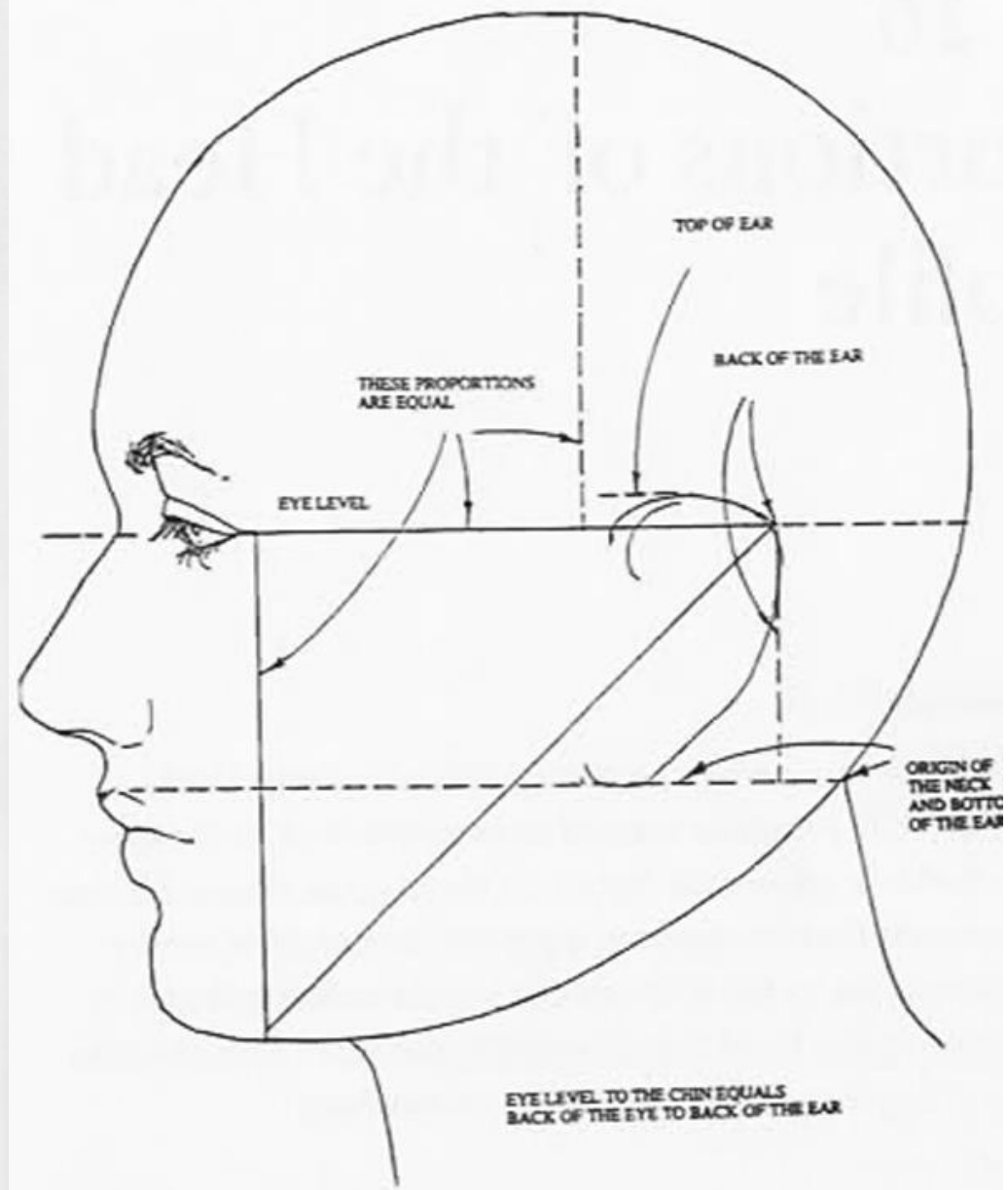




FULL VIEW
GENERAL PROPORTIONS OF THE HUMAN HEAD - USE AS A GUIDE TO PROPORTIONS



EYE TO THE CHIN = EYE TO THE TOP OF THE SKULL



EYE LEVEL TO THE CHIN EQUALS
 BACK OF THE EYE TO BACK OF THE EAR



